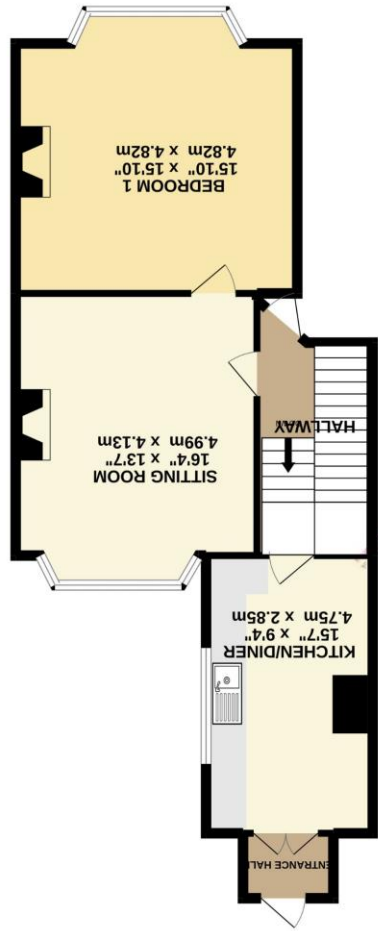




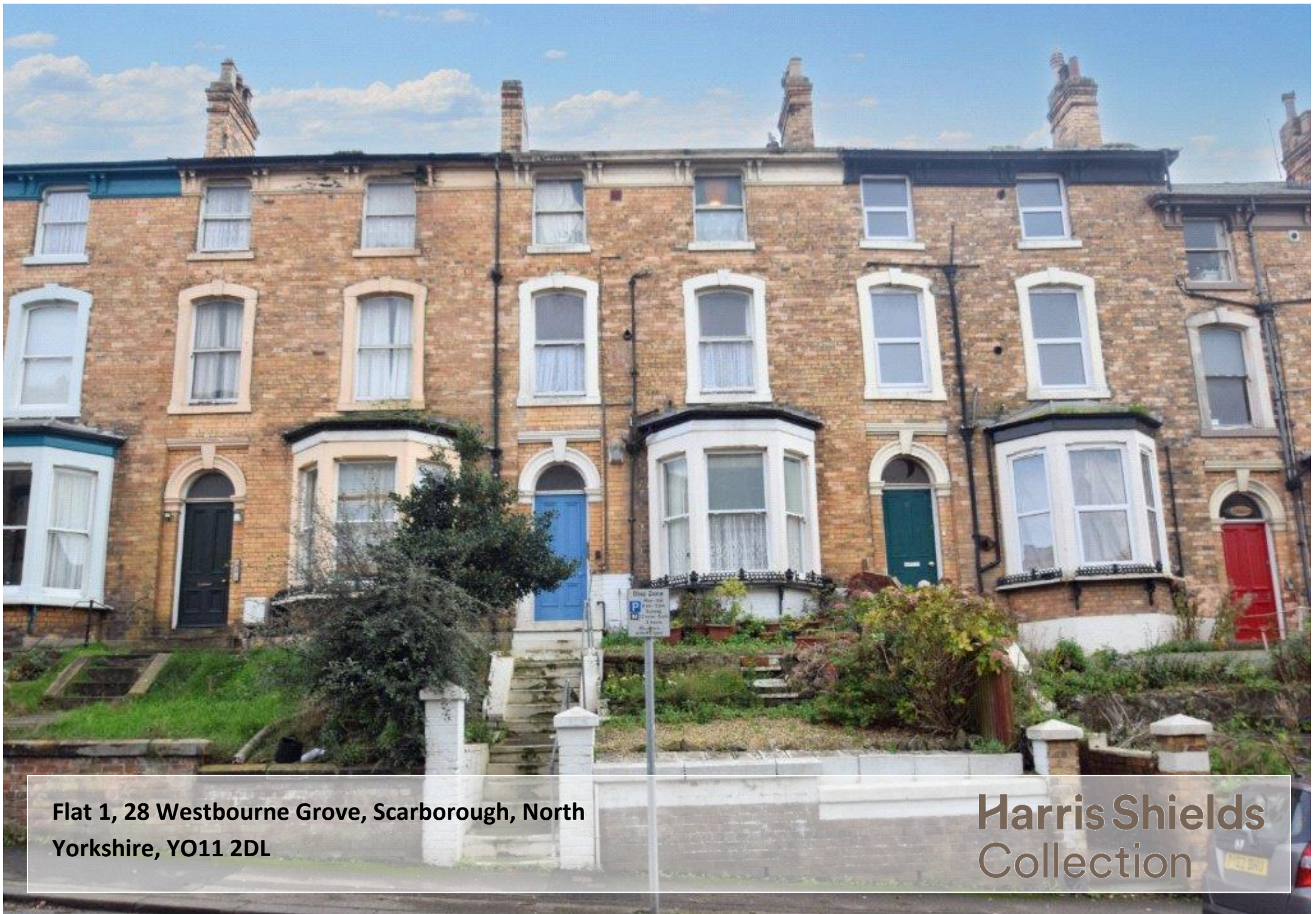
While every attempt has been made to ensure the accuracy of the figures contained here, measurements of doors, windows, floors and other items are approximate and no responsibility is taken for any inaccuracy or misstatement. This plan is for information only and should be used as a guide only. Any prospective purchaser, the service, systems and appliances shown have not been tested and no guarantee is made as to their operability or efficiency. ©2022 Harris Shields



GROUND FLOOR
677 sq. ft. (62.9 sq. m.) approx.



LOWER GROUND FLOOR
284 sq. ft. (26.3 sq. m.) approx.



Flat 1, 28 Westbourne Grove, Scarborough, North Yorkshire, YO11 2DL

Harris Shields Collection

A two bedroom duplex apartment.

- ✓ Ground Floor Duplex Apartment
- ✓ Two Double Bedrooms
- ✓ Freehold Also
- ✓ Front & Rear Gardens
- ✓ Over Two Floors
- ✓ South Cliff Location
- ✓ No Onward Chain

Guide Price £85,000

Harris Shields Collection

Harris Shields Collection, 25 Northway, Scarborough
North Yorkshire, YO11 1JH

01723 341557

mail@harris-shieldscollection.uk

<https://harris-shieldscollection.uk/>

Description

A two bedroom duplex apartment offered with front and rear gardens. Located in a favoured South Cliff location. The property does require renovation but does include the front and rear gardens. The accommodation briefly comprises; communal entrance door to hallway, door to hallway, bay fronted front facing master bedroom, rear facing bay window sitting room, stairs from the hallway to fitted kitchen/dining room, further stairs down to bathroom and bedroom two. The property does benefit from gas central heating. This is a freehold property with a deed of covenant agreement. Managed via a local management company with an approximate charge of £960 per annum. Scarborough Borough Council tax band A.



Additional Information

Council tax band



Opening doors
for over 60 years

Harris Shields
Collection